



CUSTOMER APPROVAL SHEET

Company Name	
MODEL	C101EAN01.0
CUSTOMER APPROVED	Title : Name :

APPROVAL FOR SPECIFICATIONS ONLY (Spec. Ver. 1.0)

APPROVAL FOR SPECIFICATIONS AND ES SAMPLE (Spec. Ver. 1.0)

APPROVAL FOR SPECIFICATIONS AND CS SAMPLE (Spec. Ver. 1.0)

CUSTOMER REMARK :

1 Li-Hsin Rd. 2. Science-Based Industrial Park
Hsinchu 300, Taiwan, R.O.C.
Tel: +886-3-500-8899
Fax: +886-3-577-2730

ALL RIGHTS STRICTLY RESERVED. ANY PORTION OF THIS PAPER SHALL NOT BE REPRODUCED, COPIED, OR TRANSFORMED TO ANY OTHER FORMS WITHOUT PERMISSION FROM AU OPTRONICS CORP.



Doc. Version	1.0
Total Page	22
Date	2015/5/20

Product Specification

10.1" COLOR TFT-LCD MODULE

MODEL NAME: C101EAN01.0

Model Name: C101EAN01.0

Planned Lifetime: From 2015/Apr To 2018/Apr

Phase-out Control: From 2017/Apr To 2018/Apr

EOL Schedule: 2018/Apr

< >Preliminary Specification

< >Final Specification

Note: The content of this specification is subject to change.

© 2015 AU Optonics
All Rights Reserved,
Do Not Copy.

ALL RIGHTS STRICTLY RESERVED. ANY PORTION OF THIS PAPER SHALL NOT BE REPRODUCED, COPIED, OR TRANSFORMED TO ANY OTHER FORMS WITHOUT PERMISSION FROM AU OPTRONICS CORP.

Record of Revision

Version	Revise Date	Page	Content
1.0	2015/5/20		First draft.

ALL RIGHTS STRICTLY RESERVED. ANY PORTION OF THIS PAPER SHALL NOT BE REPRODUCED, COPIED, OR TRANSFORMED TO ANY OTHER FORMS WITHOUT PERMISSION FROM AU OPTRONICS CORP.

Contents

<u>A.</u>	<u>General Description</u>	5
<u>B.</u>	<u>Features</u>	5
<u>C.</u>	<u>Physical Specifications</u>	6
	1. TFT LCD Panel.....	6
<u>D.</u>	<u>Outline Dimension</u>	7
	1. TFT-LCD Module.....	7
<u>E.</u>	<u>Electrical Specifications</u>	8
	1. TFT LCD Panel Pin Assignment	8
	2. Differential Input Data Format.....	10
	3. Input Timing Diagram	11
	4. Absolute Maximum Ratings.....	12
	5. DC Electrical Characteristics.....	12
	a. Power Specification.....	12
	b. Signal DC Electrical Characteristics.....	13
	c. Backlight Driving Conditions (Note 1)	14
	6. AC Electrical Characteristics.....	14
	a. Input AC characteristics	14
	b. Differential signal AC characteristics.....	15
	7. Power on/off sequence.....	16
	a. Power on:	16
<u>b.</u>	<u>Power off:</u>	17
<u>F.</u>	<u>Optical specifications (all for reference)</u>	18
<u>G.</u>	<u>Reliability Test Items(Note 1~3)</u>	21
<u>H.</u>	<u>Packing and Marking</u>	22
	1. Packing Form.....	22
	2. Module/Panel Label Information.....	23
	3. Carton Label Information	23
	4. Warehouse storage condition:.....	23

A. General Description

C101EAN01.0 is an a-Si type Thin Film Transistor Liquid crystal Display (TFT-LCD) with AHVA (Advanced Hyper-Viewing Angle) technology. This model is composed of a TFT-LCD, driver ICs, FPCA, and a backlight unit.

B. Features

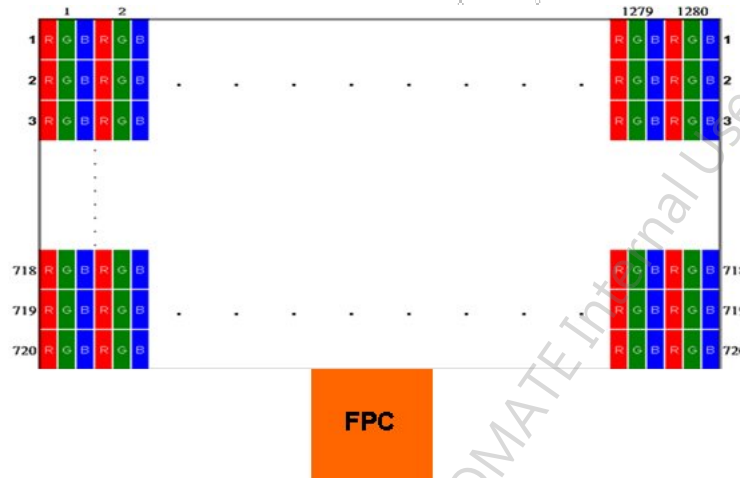
- 10.1"-inch display
- 1280 RGB x 720 resolution in RGB stripe dot arrangement
- High brightness
- Interfaces: LVDS (8 bit, JEIDA, DE mode)
- AHVA – wide view technology
- RoHs compliance

C. Physical Specifications

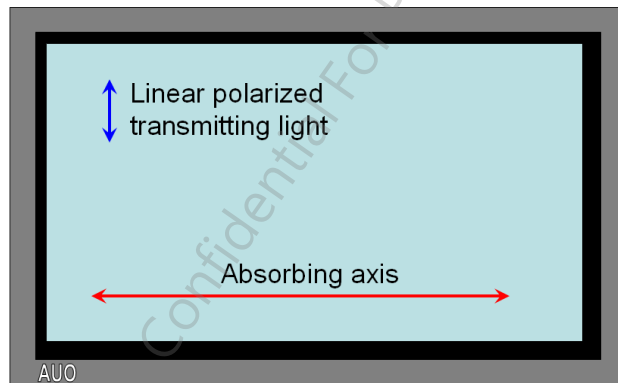
1. TFT LCD Panel

NO.	Item	Unit	Specification	Remark
1	Display Resolution	dot	1280 RGB(H)x 720(V)	
2	Active Area	mm	223.68 x 125.82mm	
3	Screen Size	inch	10.1”(Diagonal)	
4	Dot Pitch	μm	174.75μm	
5	Color Configuration	–	R. G. B. Stripe	
6	Color Depth	–	16.7 M colors	
7	Overall Dimension	mm	148 * 238.6 * 10.3	
8	Weight	g	370\pm 10 %	
9	Display Mode	–	Normally Black	
10	Surface Treatment	–	AG	

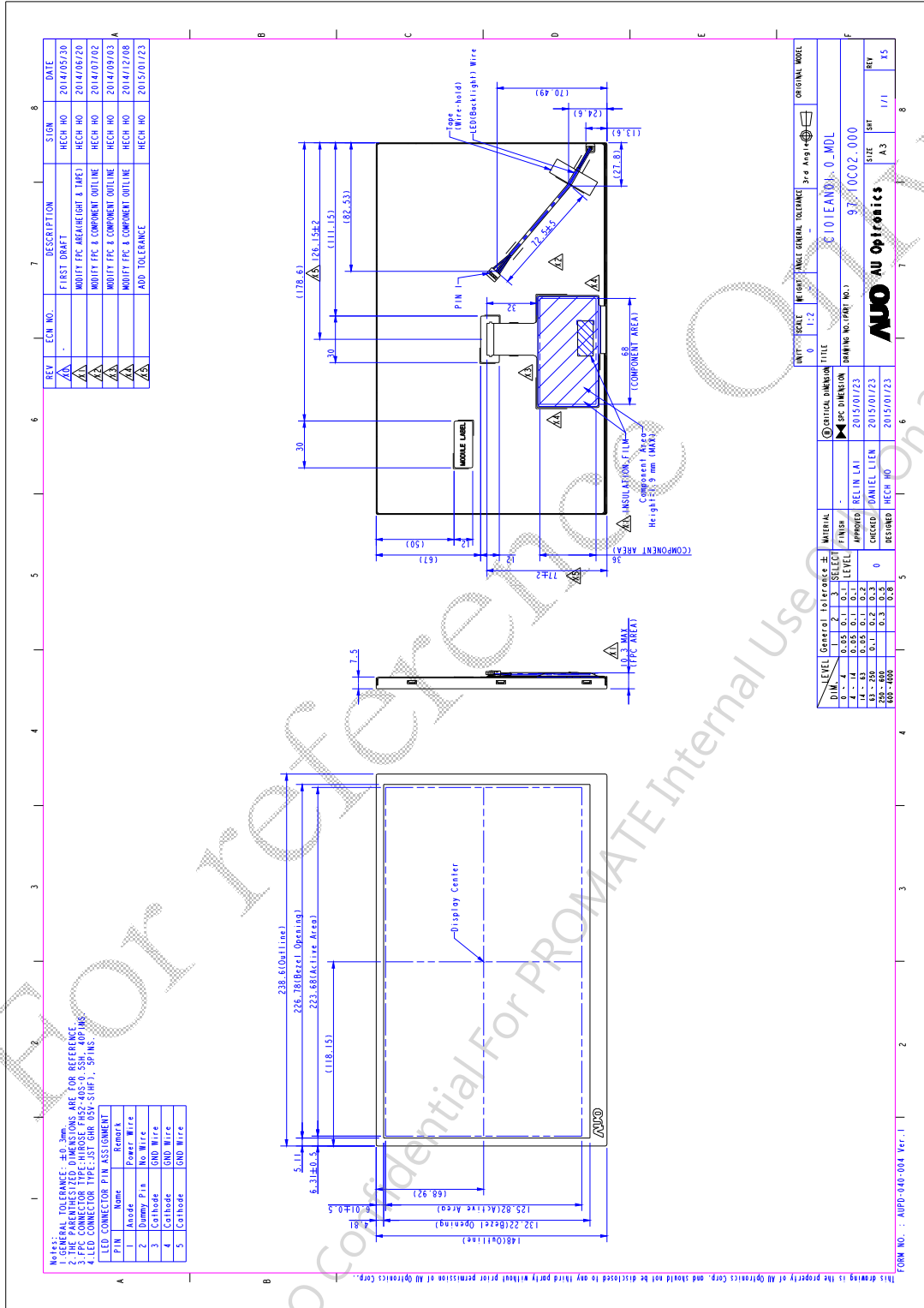
Note 1: Below figure shows dot stripe arrangement.



Note 2: Below figure shows dot stripe arrangement.



D. Outline Dimension 1. TFT-LCD Module



ALL RIGHTS STRICTLY RESERVED. ANY PORTION OF THIS PAPER SHALL NOT BE REPRODUCED, COPIED, OR TRANSFORMED TO ANY OTHER FORMS WITHOUT PERMISSION FROM AU OPTONICS CORP.



E. Electrical Specifications

1. TFT LCD Panel Pin Assignment

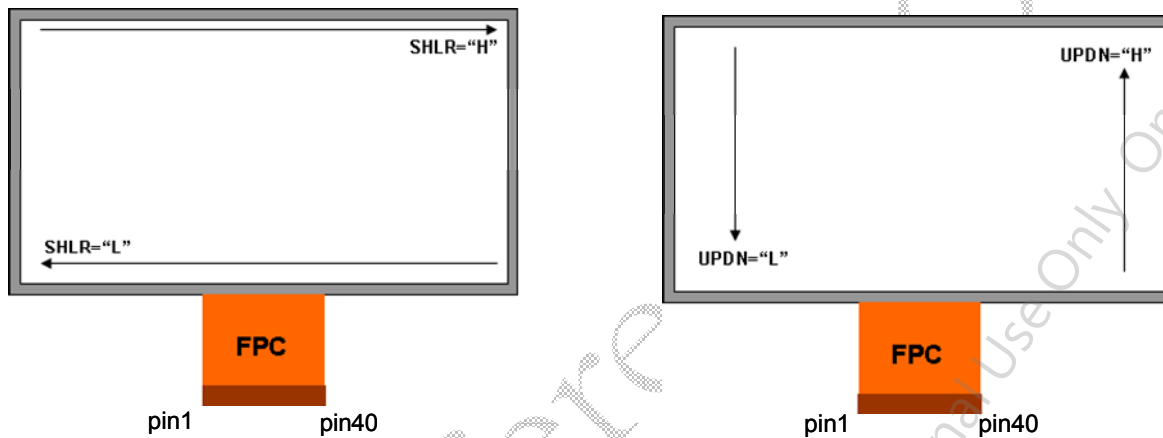
Recommended Connector: FH52-40S-0.5SH

No.	Pin Name	I/O	Description	Remarks
1	NC		Dummy	
2	SHLR	I	Horizontal scan direction control. "H" Left to Right; "L" Right to Left.	
3	UPDN	I	Vertical scan direction control. "H" Down to Up; "L" Up to Down.	
4	VDD	PI	Digital power supply voltage.	
5	GND	G	Digital Ground.	
6	GRB	I	Global reset pin. (Low active)	
7	NC		Dummy	
8	GND	G	Digital Ground.	
9	CLKP	I	Positive LVDS differential clock input.	
10	CLKN	I	Negative LVDS differential clock input.	
11	GND	G	Digital Ground.	
12	PIND0	I	Positive LVDS differential input.	
13	NIND0	I	Negative LVDS differential input.	
14	GND	G	Digital Ground.	
15	PIND1	I	Positive LVDS differential input.	
16	NIND1	I	Negative LVDS differential input.	
17	GND	G	Digital Ground.	
18	PIND2	I	Positive LVDS differential input.	
19	NIND2	I	Negative LVDS differential input.	
20	GND	G	Digital Ground.	
21	PIND3	I	Positive LVDS differential input.	
22	NIND3	I	Negative LVDS differential input.	
23	GND	G	Digital Ground.	
24	GND	G	Digital Ground.	
25	VDD	PI	Digital power supply voltage.	
26	VDD	PI	Digital power supply voltage.	
27	GND	G	Digital Ground.	
28	NC		Dummy	
29	VDDA	PI	Analog power supply voltage.	
30	VDDA	PI	Analog power supply voltage.	
31	VDDA	PI	Analog power supply voltage.	
32	VDDA	PI	Analog power supply voltage.	
33	VDDA	PI	Analog power supply voltage.	

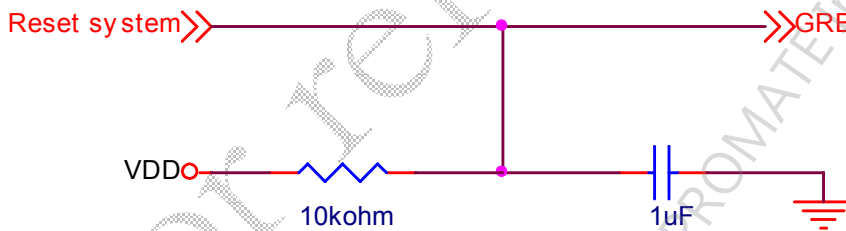
ALL RIGHTS STRICTLY RESERVED. ANY PORTION OF THIS PAPER SHALL NOT BE REPRODUCED, COPIED, OR TRANSFORMED TO ANY OTHER FORMS WITHOUT PERMISSION FROM AU OPTRONICS CORP.

34	NC		Dummy
35	GNDA	G	Analog Ground.
36	GNDA	G	Analog Ground.
37	GNDA	G	Analog Ground.
38	GNDA	G	Analog Ground.
39	GNDA	G	Analog Ground.
40	GNDA	G	Analog Ground.

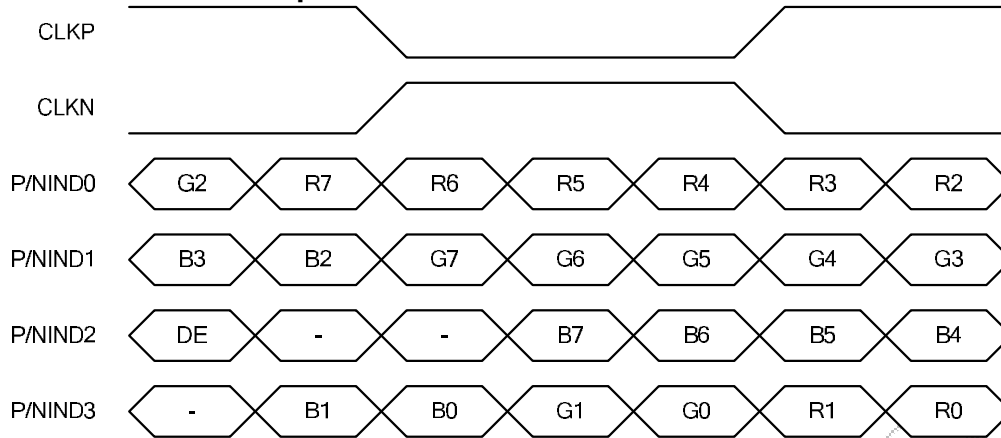
I: Digital signal input, O: Digital signal output, G: GND, PI: Power input



Outside Reset Circuit

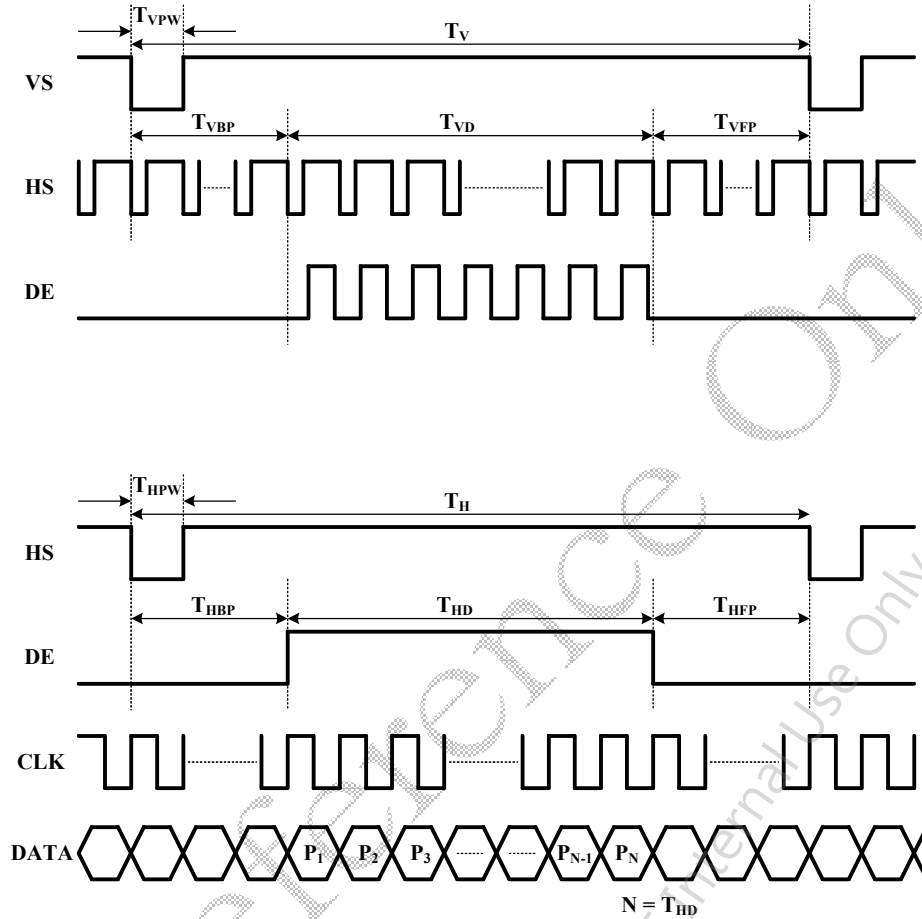


2. Differential Input Data Format



3. Input Timing Diagram

Fig. 2. Input Timing Diagram



Parameter	Symbol	Min.	Typ.	Max.	Unit.	Remark
CLK Frequency	F_{CLK}	63	69	84	MHz	
HSYNC	Period	T_H	1388	1480	1528	CLK
	Horizontal display area	T_{HD}	1280			CLK
	Blanking	$T_{HBP} + T_{HFP}$	108	200	289	CLK
VSYNC	Period	T_V	757	773	850	HS
	Vertical display area	T_{VD}	720			HS
	Blanking	$T_{VBP} + T_{VFP}$	37	53	130	HS

4. Absolute Maximum Ratings

Items	Symbol	Values		Unit	Condition
		Min.	Max.		
Power Voltage	VDD	-0.3	5	V	GND = 0 V
	VDDA	-0.3	5	V	GND = 0 V
Input Signal Voltage	Vi	-0.3	VDD	V	GND = 0 V
Operation Temperature	Topa	-30	85	°C	Ambient
Storage Temperature	Tstg	-40	95	°C	Ambient

Note 1: Functional operation should be restricted under normal ambient temperature.

5. DC Electrical Characteristics

The following items are measured under stable condition and suggested application circuit.

a. Power Specification

Parameter	Symbol	Min	Typ	Max	Unit	Notes
Power Supply	VDD	3	3.3	3.6	V	Note 1
	IVDD	25	30	80	mA	Note 1
	IVDD inrush current			500	mA	
	VDDA	3	3.3	3.6	V	Note 1
	IVDDA	200	380	800	mA	Note 1
	IVDDA inrush current			1.2	A	
	VDD	3	3.3	3.6	V	Note 1

Note 1: Test pattern is the following picture.



Fig. 3. Test pattern for power specification

b. Signal DC Electrical Characteristics

Parameter	Symbol	Min	Typ	Max	Unit	Notes
Input signal voltage	V_i	-0.3	-	VDD	V	Note 1
Input high level voltage	V_{IH}	0.7VDD	-	VDD	V	Note 1
Input low level voltage	V_{IL}	GND	-	0.3VDD	V	Note 1
Differential input high threshold	R_{XVTH}	0.1	-	-	V	Note 2
Differential input low threshold	R_{XVTL}	-	-	-0.1	V	Note 2
Input voltage range (singled-end)	R_{XVIN}	0.8	-	1.6	V	Note 2
Input differential voltage	$ V_{ID} $	0.2	-	0.6	V	Note 2
Differential Input Common Mode Voltage	R_{XVCM}	1.1	1.2	1.4	V	Note 2

Note 1: TTL interface signal DC characteristics

Note 2: LVDS interface signal DC characteristic

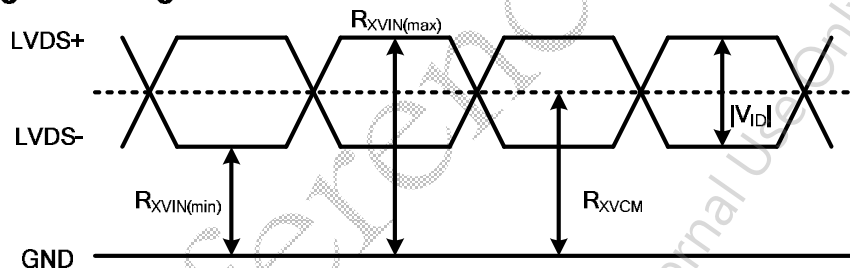
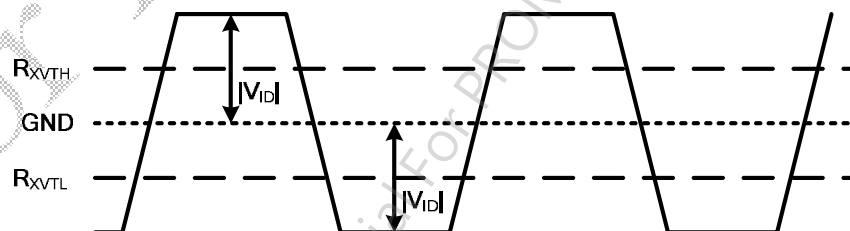
Single-end Signal

Differential Signal


Fig. 4. LVDS DC characteristics diagram

c. Backlight Driving Conditions (Note 1)

Parameter	Symbol	Min.	Typ.	Max.	Unit	Remark
LED Supply Current	I_L		80	85	mA	single serial Note 3
LED Supply Voltage	V_L		24	27.2	V	single serial Note 3
LED Life Time	L_L	(10,000)			hr	Reference & Note 2

Note 1: Light-bar has 24 pieces of LED (3 strings, 8 pieces for each string).

Note 2: The LED lifetime 10000hrs means , after normal use at 80mA, under +25 ° C, the brightness decreases to 50% of original level.

Note 3: The LED supply power is for 3 string of LED.

Note 4: The voltage capacity of LED driver IC must be over max. of LED Voltage.

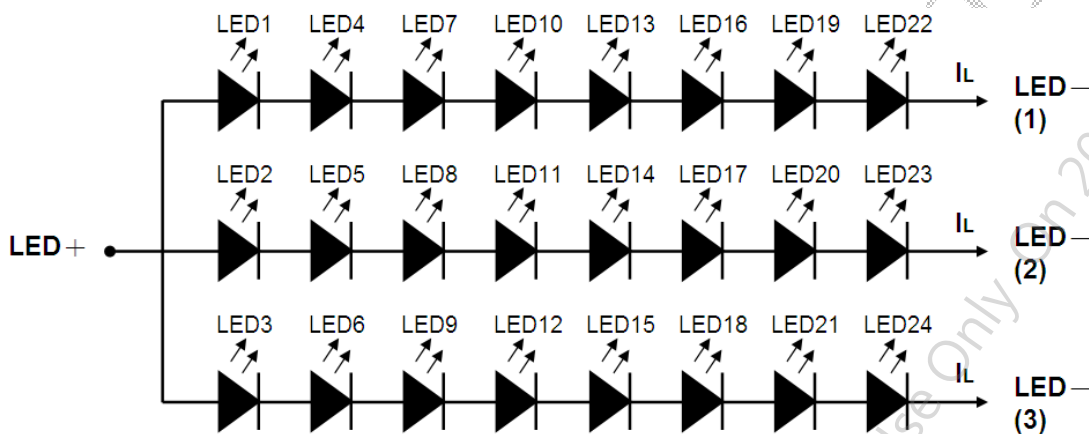


Fig. 5: Light bar structure

6. AC Electrical Characteristics
a. Input AC characteristics

Parameter	Symbol	Min.	Typ.	Max.	Unit	Remark
VDD power on slew time	T_{POR}			15	ms	From 0V to 90% VD Note 1
GRB active pulse width	T_{GRB}	1		20	ms	VDD=3.3V

Note 1:the inrush current spec should follow VDD power on slew time min value is 1ms and max value is 15ms. Inrush current maybe out of spec.(max:500mA)

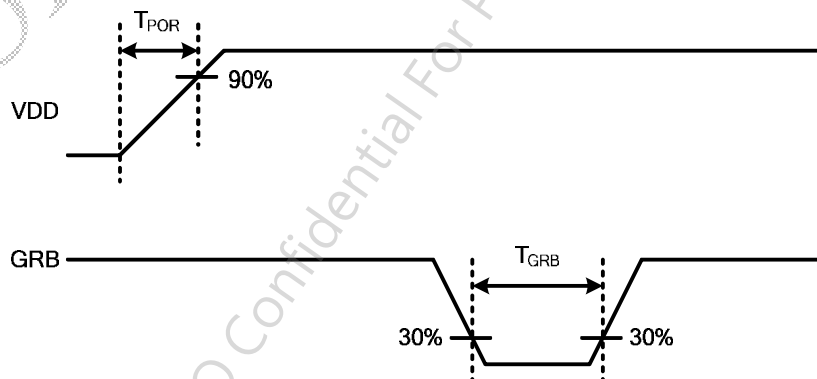


Fig. 6. VDD and GRB timing diagram

b. Differential signal AC characteristics

Parameter	Symbol	Min.	Typ.	Max.	Unit	Remark
Clock frequency	R_{XFCLK}	25	-	84	MHz	
Input data skew margin	T_{RSKM}	400			ps	

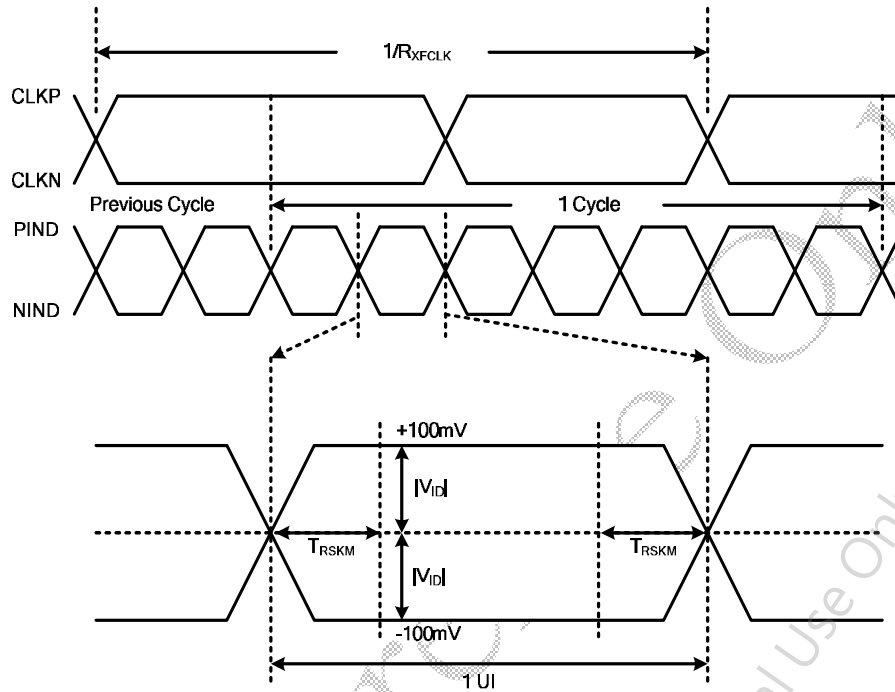
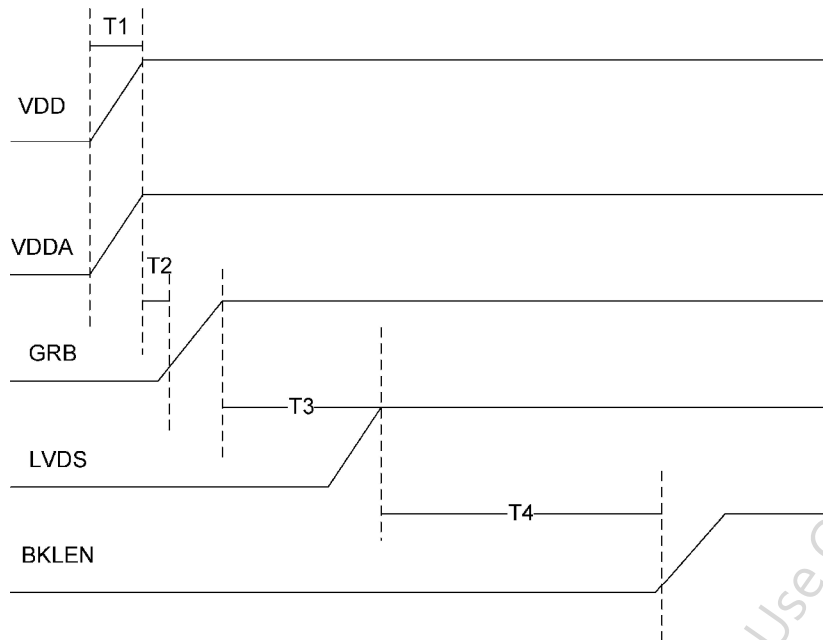


Fig. 7 LVDS AC characteristics diagram

7. Power on/off sequence

The LCD adopts high voltage driver IC, so it could be permanently damaged under a wrong power on/off sequence. The suggested LCD power sequence is below:

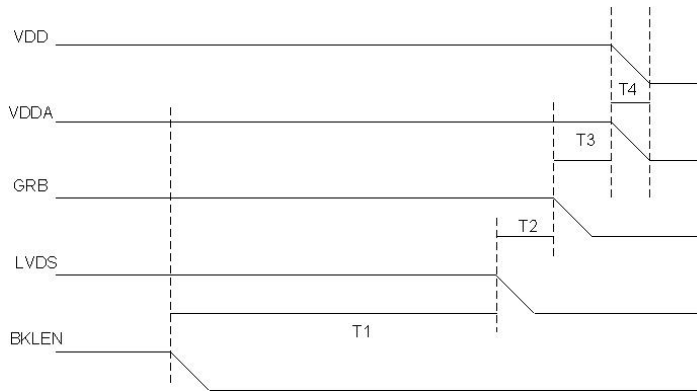
- a. **Power on:**
VDD&VDDA → GRB → LVDS → BKLEN



Power on timing:

Parameter	Value			Units
	Min.	Typ.	Max.	
T1	-	-	15	ms
T2	1	-	-	ms
T3	1	-	300	ms
T4	300	350	-	ms

b. Power off:
BKLEN → LVDS → GRB → VDD&VDDA



Power off timing:

Parameter	Value			Units
	Min.	Typ.	Max.	
T1	90	100	-	ms
T2	1	30	300-	ms
T3	1	30	40	ms
T4	50	-	-	ms

F. Optical specifications (all for reference)

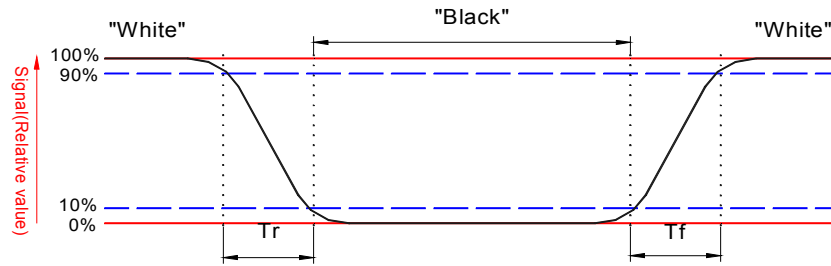
Item	Symbol	Condition	Min.	Typ.	Max.	Unit	Remark
Response Time Rise Fall	Tr	$\theta = 0^\circ$	-	-	20	ms	Note 3
	Tf		-	-	20		
Viewing Angle Top Bottom Left Right		CR 10	-	80 80 80 80	-	deg.	Note 7, 8
Contrast ratio	CR	$\theta = 0^\circ$	800	1000	-		Note 4, 5, 6
Brightness	Y_L	$\theta = 0^\circ$	500	700	-	cd/m ²	Note 9
White Chromaticity	X	$\theta = 0^\circ$	0.265	0.305	0.345		Note 10
	Y	$\theta = 0^\circ$	0.290	0.330	0.370		
Red Chromaticity	X	$\theta = 0^\circ$	0.601	0.641	0.681		
	Y	$\theta = 0^\circ$	0.291	0.331	0.371		
Green Chromaticity	X	$\theta = 0^\circ$	0.270	0.310	0.350		
	Y	$\theta = 0^\circ$	0.565	0.605	0.645		
Blue Chromaticity	X	$\theta = 0^\circ$	0.109	0.149	0.189		
	Y	$\theta = 0^\circ$	0.019	0.059	0.099		
Uniformity		-	80			%	Note 11

Note 1: Measurement should be performed in the dark room, optical ambient temperature = 25 °C, and backlight current $I_L = 80\text{mA}$.

Note 2: To be measured in the center area of TFT-LCD with a field angle of 1° by Topcon luminance meter SR3, after 10 minutes operation and warm up 30 minutes.

Note 3: Definition of response time:

The output signals of photo detector are measured when the input signals are changed from "black state" to "white state" (falling time) and from "white state" to "black state" (rising time), respectively.



Note 4: Based on liquid crystal characteristics, the response time will become slower and the color of panel will become darker than the above optical specification when ambient temperature is below 25 °C.

Note 5: Contrast ratio is calculated with the following formula.

$$\text{Contrast ratio} = \frac{\text{Photo detector output when LCD is at "White" state}}{\text{Photo detector output when LCD is at "Black" state}}$$

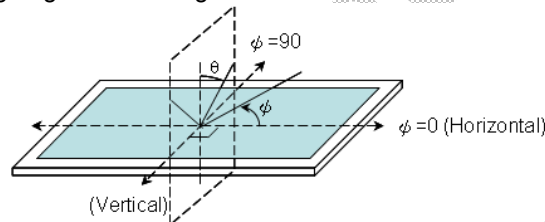
Note 6: White Vdata=V1 or V18

Black Vdata=V9 or V10

(For definition of V1, V9, V10 & V18, please refer to Appendix)

The 100% transmission is defined as the transmission of LCD panel when all the input terminals of module are electrically opened.

Note 7: Definition of viewing angle: refer to figure as below.

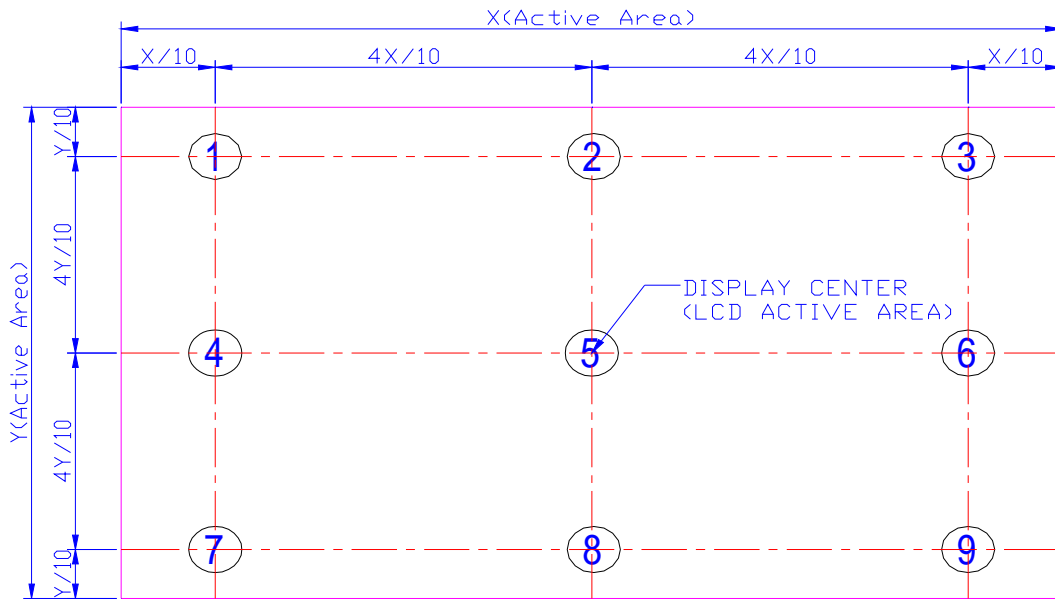


Note 8: Viewing angles are measured at the center of the panel when all the input terminals of LCD oanel are electrically opened.

Note 9: Brightness is measured at the center of the display.

Note 10: The viewing angles are measured at the center area of the panel when all the input terminals of LCD panel are electrically opened.

Note 11: Luminance Uniformity of these 9 points is defined as below: (1 : 4 : 4 : 1)



$$\text{Uniformity} = \frac{\text{minimum luminance in 9 points (1-9)}}{\text{maximum luminance in 9 points (1-9)}}$$

G. Reliability Test Items(Note 1~3)

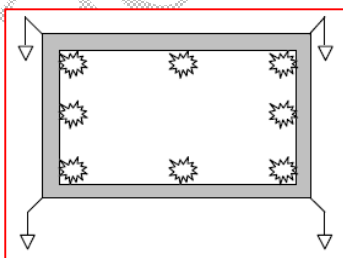
No.	Test items	Conditions		Remark
1	High temperature storage	Ta= 95 °C	240 Hrs	
2	Low temperature storage	Ta= -40 °C	240 Hrs	
3	High temperature operation	Ta= 85 °C	240 Hrs	
4	Low temperature operation	Ta= -30 °C	240 Hrs	
5	High temperature and high humidity	Ta= 60 , 90 % RH	240 Hrs	
6	Heat shock	-30 °C ~ 85 / 100 cycles 1 Hrs/cycle		
7	Shock	100 G, 6 ms, ±X, ±Y, ±Z 3 times for each direction		
8	Electrostatic Discharge	Contact = ± 8 kV, 1sec, 8 point, 10 times/point class B (R=330 ,C=150pF) Air = ± 15 kV, 1sec, 8 point, 10 times/point class B (R=330 ,C=150pF)		Operation (Note 4)
9	Vibration	Frequency range	8 ~ 33.3 Hz	
		Stoke	1.3 mm	
		Sweep	2.9 G, 33.3 ~ 400Hz	
		Cycle	15 min.	
		2 hours for each direction of X, Z 4 hours for Y direction		
10	Vibration (with carton)	Random vibration: 0.015 G ² /Hz from 5 ~ 200 Hz -6 dB/Octave from 200 ~ 500 Hz		
11	Drop (with carton)	Height: 60 cm 1 corner, 3 edges, 6 surfaces		

Note 1: Ta: Ambient temperature

Note 2: In the standard condition, there is no display function NG issue occurred. All the cosmetic specification is judged before the reliability stress.

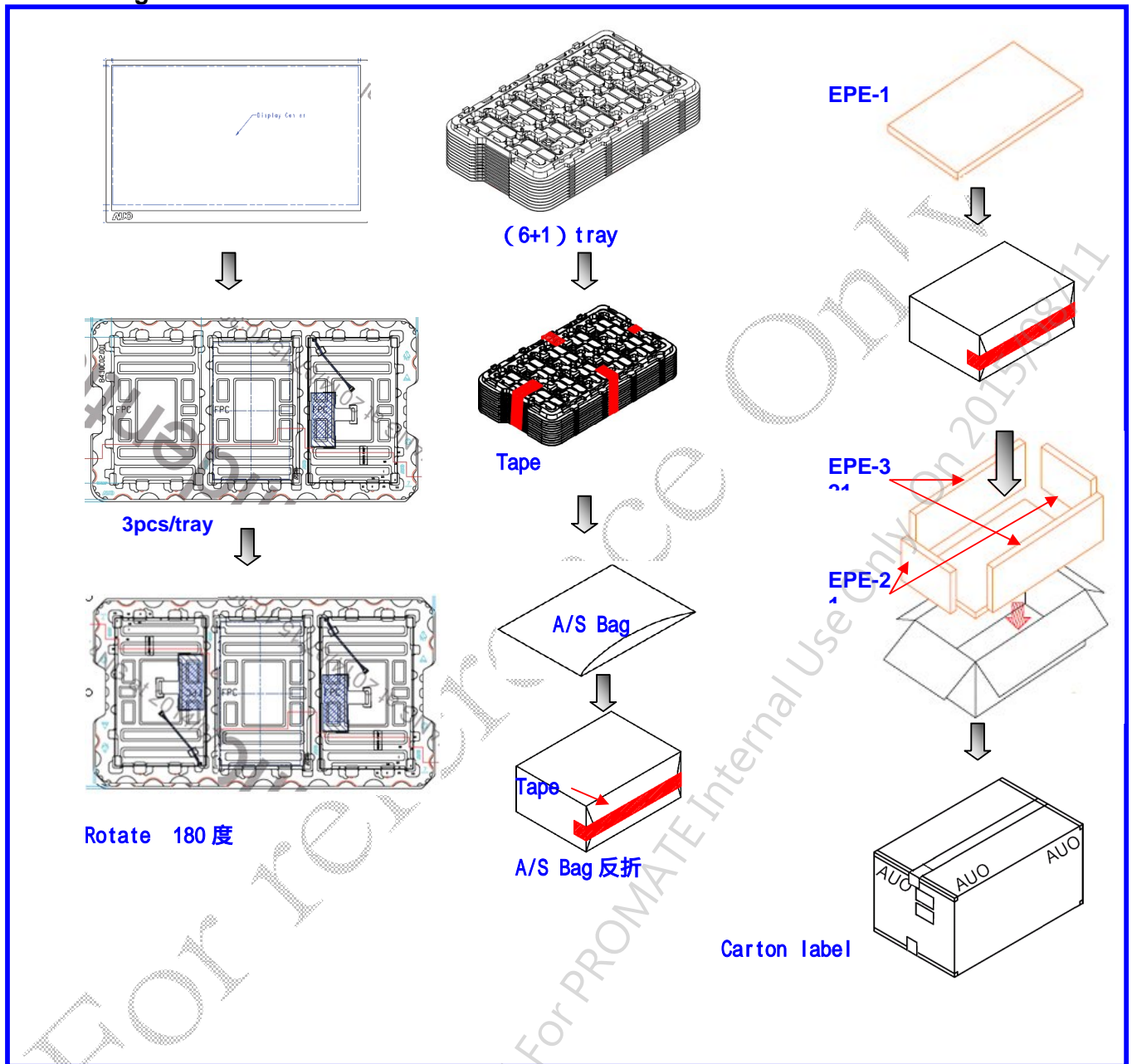
Note 3: I_L = 80mA

Note 4: Test techniques follow IEC61000-4-2 standard. Class B – Some performance degradation allowed.
No data lost. Self-recoverable. No hardware failures.



H. Packing and Marking

1. Packing Form

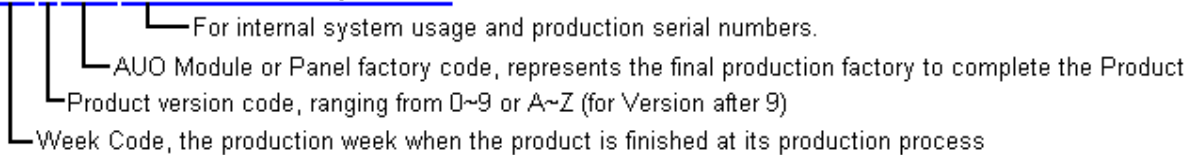


3pcs/tray
(6+1) tray/carton
18pcs/carton
Total weight : 9.25+/-0.2 Kg

2. Module/Panel Label Information

The module/panel (collectively called as the "Product") will be attached with a label of Shipping Number which represents the identification of the Product at a specific location. Refer to the Product outline drawing for detailed location and size of the label. The label is composed of a 22-digit serial number with the following definition:

ABCDEFGHIJKLMNQRSTUV



Example:

501M06ZL06123456781Z05:

Product Manufacturing Week Code: WK50

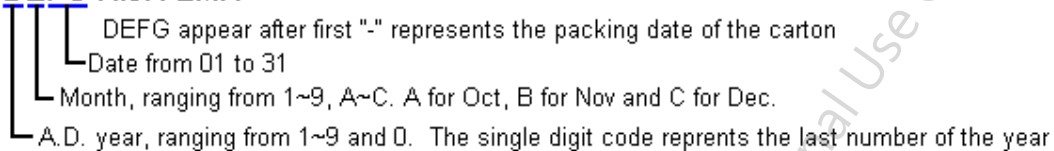
Product Version: Version 1

Product Manufacturing Factory: M06

3. Carton Label Information

The packing carton will be attached with a carton label where packing Q'ty, AUO Model Name, AUO Part Number, Customer Part Number (Optional) and a series of Carton Number in 13 or 14 digits are printed. The Carton Number is appearing in the following format:

ABC-DEFG-HIJK-LMN



Refer to the drawing of packing format for the location and size of the carton label.

4. Warehouse storage condition:

When storing modules as spares for a period, the following precautions are necessary

(1) Store them in a dark place. Do not expose the module to sunlight or fluorescent light.

- a) Keep the temperature between 20 and 30 at normal humidity(30% 70%) with a period no longer than 3 months as recommended condition.
- b) Keep the temperature at 60 and 60%RH with a period no longer than 1 month as recommended condition.



For reference Only
AUO Confidential For PROMATE Internal Use Only On 2015/08/11

ALL RIGHTS STRICTLY RESERVED. ANY PORTION OF THIS PAPER SHALL NOT BE REPRODUCED, COPIED, OR TRANSFORMED TO ANY OTHER FORMS WITHOUT PERMISSION FROM AU OPTRONICS CORP.